



**SHROPSHIRE COUNCIL**

**WILDLIFE AND COUNTRYSIDE ACT 1981**

**DEFINITIVE MAP AND STATEMENT OF RIGHTS OF WAY FOR SHROPSHIRE**

**THE SHROPSHIRE COUNCIL (FOOTPATH 44R DELETION AND ADDITION,  
PARISHES OF NEEN SAVAGE AND CLEOBURY MORTIMER AND FOOTPATH  
ADDITION, PARISH OF CLEOBURY MORTIMER)  
MODIFICATION ORDER 2013**

This Order is made by the Shropshire Council ("the Council") under section 53(2)(b) of the Wildlife and Countryside Act 1981 ("the Act") because it appears to the Council that the Shropshire Definitive Map and Statement require modification because in accordance with the provisions of Section 53(3)(c)(i)&(iii) the Council has discovered evidence which (when considered with all other relevant evidence available to them) shows:-

- (i) that a right of way which is not shown on the map and statement subsists or is reasonably alleged to subsist over land in the area to which the map relates, being a right of way to which this part applies;

and

- (iii) that there is no public right of way over the land shown in the map and statement as a highway of any description, or any other particulars contained in the map and statement require modification.

The Council hereby order that:-

1. For the purpose of this Order the relevant date is 1st July 2013.
2. The Shropshire Definitive Map and Statement shall be modified as described in Part I and Part II of the Schedule and shown on the map attached to the Order.
3. This Order shall take effect on the date it is confirmed and may be cited as The Shropshire Council (Footpath 44R Deletion and Addition, Parishes of Neen Savage and Cleobury Mortimer and Footpath Addition, Parish of Cleobury Mortimer) Modification Order 2013.

## SCHEDULE

### PART I

#### Modification of Definitive Map

i) Footpath 44R Deletion and Addition, Parishes of Neen Savage and Cleobury Mortimer – Order Map 1

**Description of path or way to be deleted**

The full width of that Footpath 44R, Neen Savage, from point A on Order Map 1 (SO 6678 7639), running in a general easterly direction along the side of a steep sided valley through a field boundary and continuing generally easterly then turning to follow a general east-south-easterly direction descending the river bank to cross a watercourse and the parish boundary into Cleobury Mortimer to continue above trees on the valley side and turning gradually to a general north easterly direction to a junction with Footpath 64, Cleobury Mortimer, at point B on the Order Map (SO 6717 7640); a total distance of approximately 405 metres.

**Description of path or way to be added**

Footpath 44R, Cleobury Mortimer, to be added from point C on Order Map 1 (SO 6693 7634), at a junction with Footpath 62, Cleobury Mortimer, running in a general east-north-easterly direction with a width of 1.5 metres along a grassed bank above chalet homes following a stone wall then running down the side of the river bank to the watercourse and the parish boundary, a distance of approximately 200 metres. The route continues as FP 44R, Neen Savage, following a river bank path to the north of the watercourse to point D on the Order Map (SO 6716 7641) at a junction with Footpath 43, Neen Savage, a distance of approximately 60 metres with a width of 1.5 metres.

ii) Footpath Addition, Parish of Cleobury Mortimer – Order Map 2

**Description of path or way to be added**

A footpath to be added in the Parish of Cleobury Mortimer from point A on Order Map 2 (SO 6658 7640) where it leaves the County Road, running in a general

easterly direction following a surfaced driveway to a junction with Footpath 62, Cleobury Mortimer, at point B on the order map (SO 6681 7636); a total distance of approximately 238 metres with a width of 3 metres throughout.

## PART II

### Modification of Definitive Statement

#### Description of paths or ways to be added

- i) Footpath 44R, Cleobury Mortimer, to be added from point C on Order Map 1 (SO 6693 7634), at a junction with Footpath 62, Cleobury Mortimer, running in a general east-north-easterly direction with a width of 1.5 metres along a grassed bank above chalet homes following a stone wall then running down the side of the river bank to the watercourse and the parish boundary, a distance of approximately 200 metres. The route continues as FP 44R, Neen Savage, following a river bank path to the north of the watercourse to point D on the Order Map (SO 6716 7641) at a junction with Footpath 43, Neen Savage, a distance of approximately 60 metres with a width of 1.5 metres.
  
- ii) A footpath to be added in the Parish of Cleobury Mortimer from point A on Order Map 2 (SO 6658 7640) where it leaves the County Road, running in a general easterly direction following a surfaced driveway to a junction with Footpath 62, Cleobury Mortimer, at point B on the order map (SO 6681 7636); a total distance of approximately 238 metres with a width of 3 metres throughout.

Executed as a deed by affixing the  
Common Seal of Shropshire Council  
on 19<sup>th</sup> July 2013  
in the presence of:-

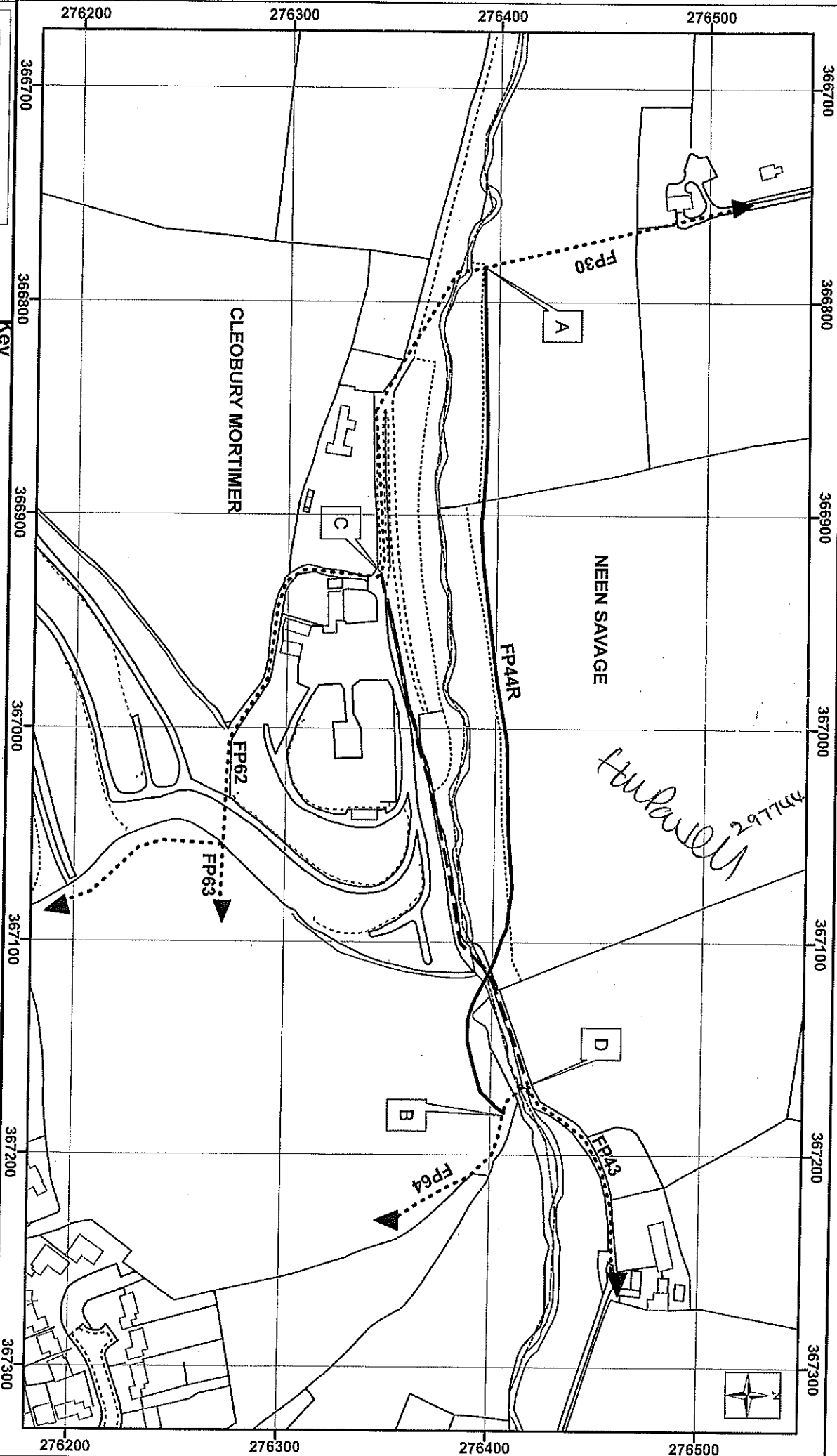
*HM Powell*  
Legal Services Manager

297744

The foregoing order is hereby confirmed

*Barney Grimshaw* 21 MAY 2018

An Inspector appointed by The Secretary of  
State for Environment, Food and  
Rural Affairs



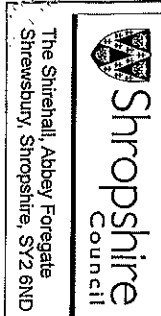
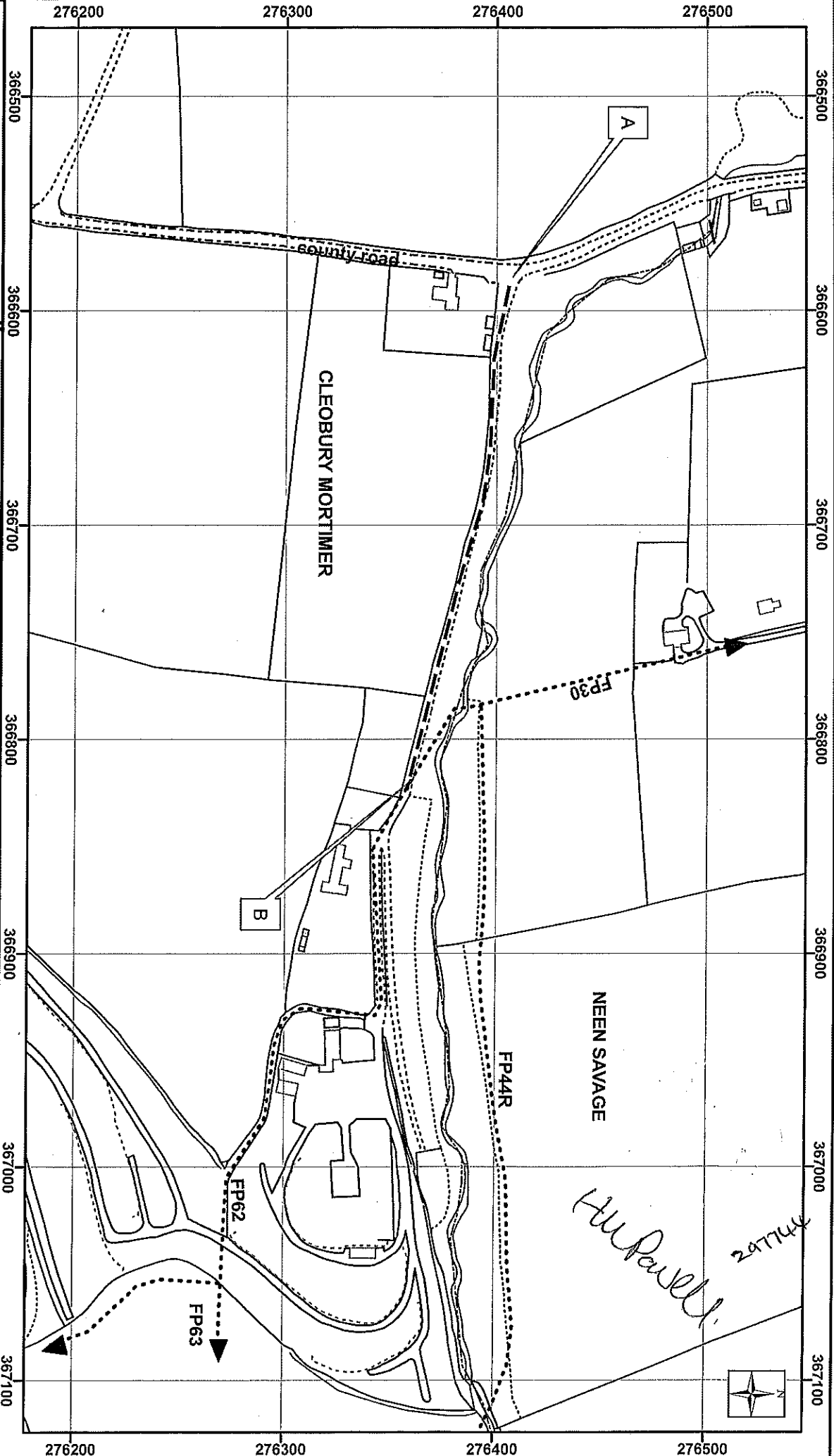
The Shirehall, Abbey Foregate  
 Shrewsbury, Shropshire, SY2 6ND

**Key**

- Route to be deleted
- Route to be added
- Existing to remain
- Parish Boundary

Scale: 1:2,500

© Crown copyright and database rights 2013  
 Ordnance Survey 100049049  
 You are not permitted to copy, sub-licence, distribute  
 or sell any of this data to third parties in any form.



**Key**

- Route to be deleted
- Route to be added
- Existing to remain
- Parish Boundary

Scale: 1:2,500

© Crown copyright and database rights 2013  
 Ordnance Survey 100049049  
 You are not permitted to copy, sub-licence, distribute or sell any of this data to third parties in any form.

DATED 19<sup>th</sup> July 2013

SHROPSHIRE COUNCIL

WILDLIFE AND COUNTRYSIDE ACT 1981

DEFINITIVE MAP AND STATEMENT OF  
RIGHTS OF WAY FOR SHROPSHIRE

THE SHROPSHIRE COUNCIL  
(FOOTPATH 44A DELETION AND ADDITION,  
PARISHES OF NEEN SAVAGE AND  
CLEOBURY MORTIMER AND FOOTPATH  
ADDITION, PARISH OF CLEOBURY  
MORTIMER) MODIFICATION ORDER 2013

DEB HUGHES  
SERVICE MANAGER OUTDOOR RECREATION  
THE SHIREHALL  
ABBAY FOREGATE  
SHREWSBURY

*This information is supplied in connection with an Order made by Shropshire Council under the Wildlife and Countryside Act 1981 and is not to be used for any other purpose. Shropshire Council asserts its right to the copyright of this Order. It may not be reproduced or transmitted in any form or by any means or stored in any retrieval system of any nature except with prior written permission except for the purposes of this consultation.*